

Contactless Proximity Sensors



...with switching output

1part Hall-Sensor system for detecting ferromagnetic targets

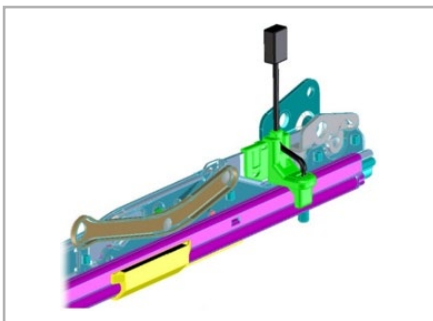
2part Hall-Sensor system for detecting magnetic targets

Features and Benefits

- contactless, functional, compact, robust and technically mature
- current interface enables for plausibility checking
- smart magnetic design
- production suitability of the design proven by several customer
- specific environmental qualifications and years of in-car use

Applications

- cylinder end position detection for convertibles
- seat position detection



Contactless Proximity Sensors

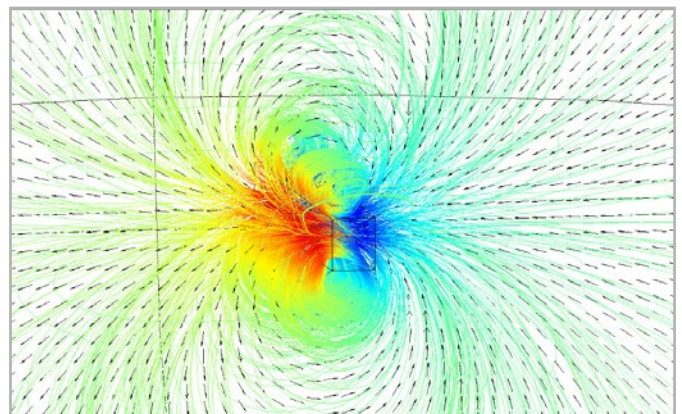
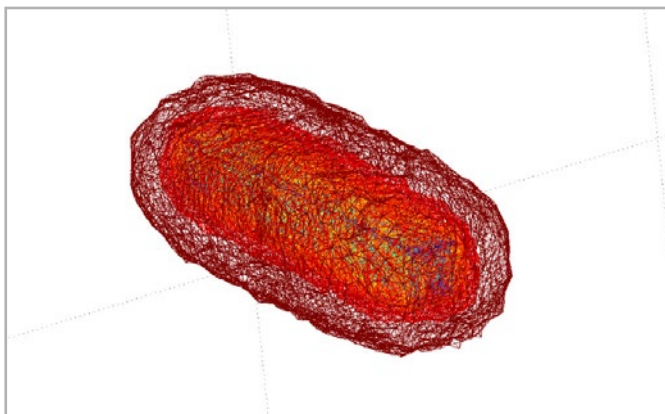
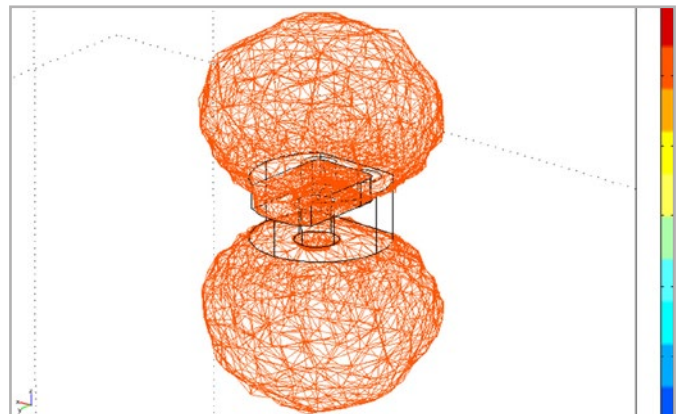
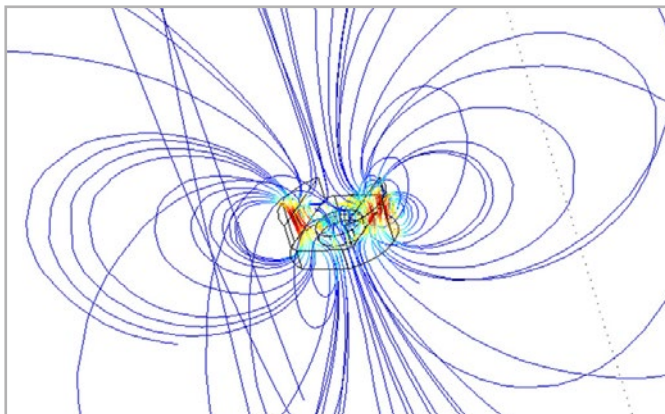
Short Description

The Sensor

- compact design
- electronic parts totally encapsulated (no risk of moisture inside)
- compensated process tolerances
- individual taught operating point

The Magnet

- use of a professional and modern FEM-Design-Tool for an optimal magnetic sensor design within the application.
- special magnet geometry leads to very low temperature sensitivity of the sensor system (1 part sensor system)



Contact

info@swoboda.de